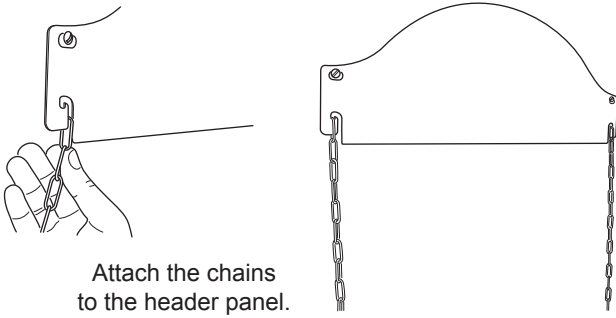


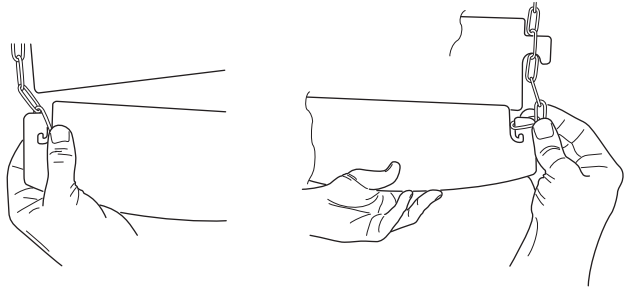
Chalkboard

1



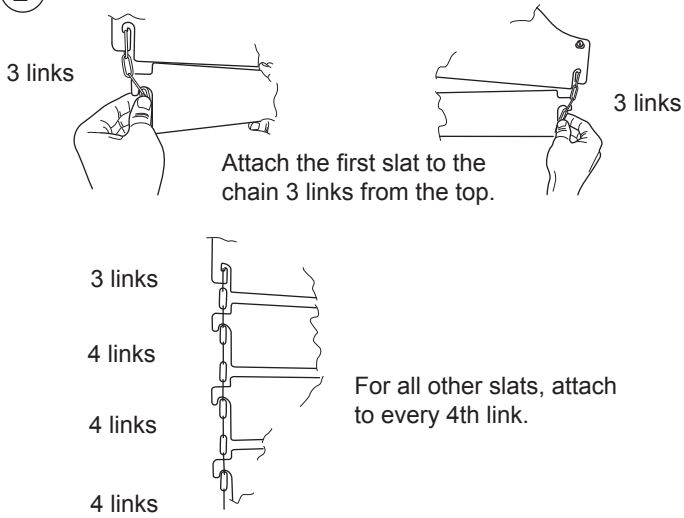
Attach the chains to the header panel.

3



Finally fit the footer panel to the bottom link.

2



3 links

Attach the first slat to the chain 3 links from the top.

3 links

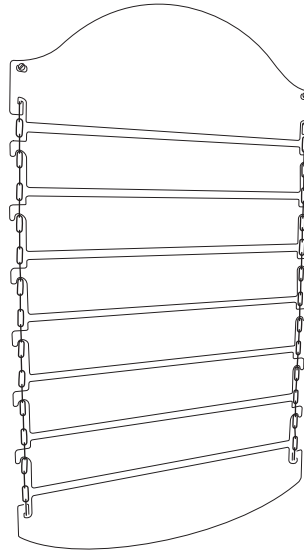
3 links

4 links

4 links

4 links

For all other slats, attach to every 4th link.



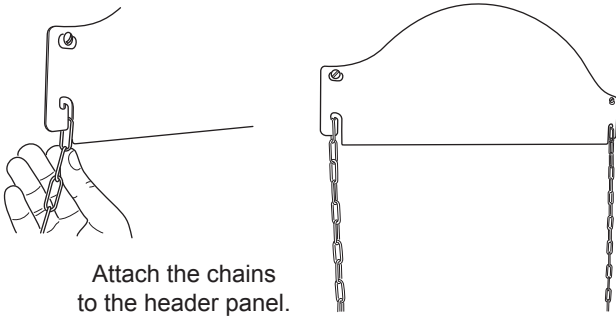
Individual slats can be removed, reversed or replaced one at a time. If required, the whole assembly can be carefully removed & reversed to show an alternative display.

Use 'Chalk Markers' for best result & 'Mr Muscle' or equivalent non-abrasive cleaner for easy removal.

S-0162-01

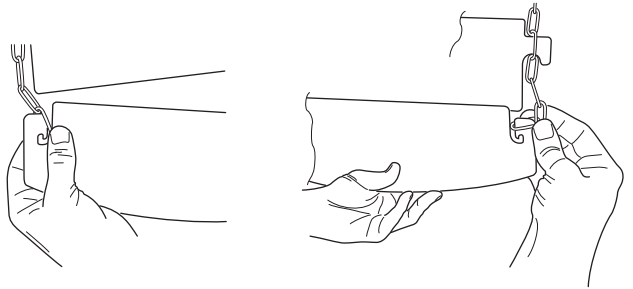
Chalkboard

1



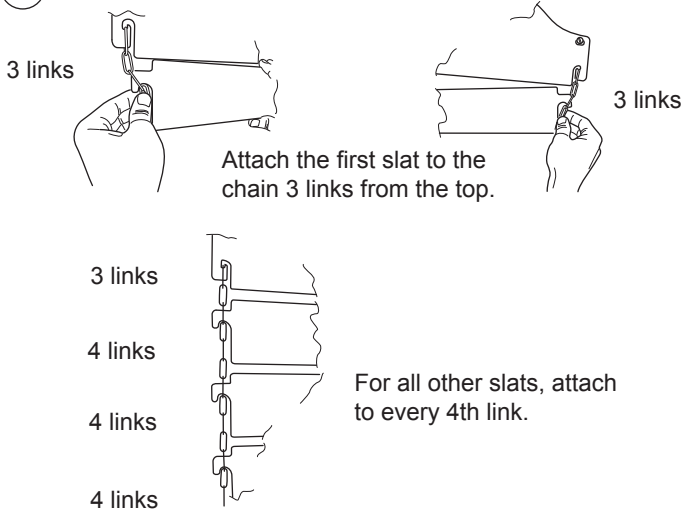
Attach the chains to the header panel.

3



Finally fit the footer panel to the bottom link.

2



3 links

Attach the first slat to the chain 3 links from the top.

3 links

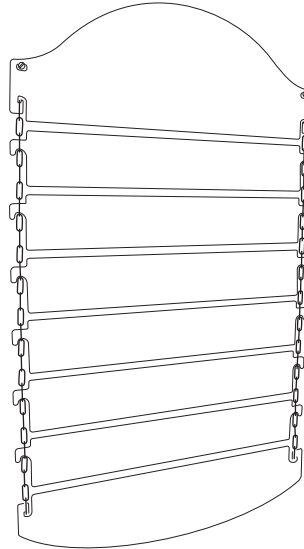
3 links

4 links

4 links

4 links

For all other slats, attach to every 4th link.



Individual slats can be removed, reversed or replaced one at a time. If required, the whole assembly can be carefully removed & reversed to show an alternative display.

Use 'Chalk Markers' for best result & 'Mr Muscle' or equivalent non-abrasive cleaner for easy removal.

S-0162-01